



Software Installation Instructions

For Windows Mobile and Pocket PC
Requires ESRI ArcPad® Software version 7.0 or greater
(Instructions are based on Windows Mobile Version 5.1.1)

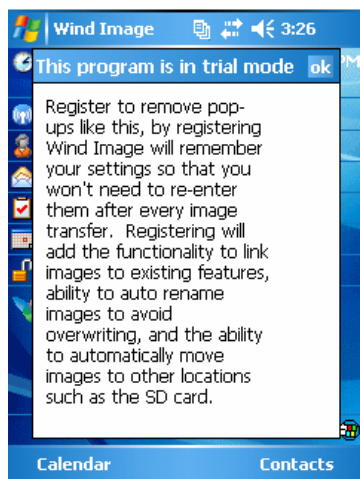
1. Connect your mobile device using Microsoft ActiveSync. Once connected minimize ActiveSync and continue to the next step.
2. Verify you have installed or install ESRI ArcPad® 7.0 or greater.
3. Download and install Microsoft Compact Framework 2.0 SP1 from:
www.microsoft.com/downloads
4. Download and install Microsoft .Net 2.0 from:
www.microsoft.com/downloads
5. Download the latest version of Wind Image™ from:
www.windenvironmental.com/windimage
6. Once the download is complete for Wind Image™ select run.
7. Select next to begin the installation.
8. To install the software you must accept the terms of the license agreement.
9. Once you accept the license agreement select next to move to the next step.
10. Now you are going to select the destination (install) location for the desktop portion of Wind Image™. (Default location C:\Program Files\Wind Image)
11. Once you select the install location (default location recommended) select next to move to the next step.

12. Specify the start menu location for Wind Image™ default location is Wind Image (default is recommended) once you have selected the start menu location select next to continue to the next step.
13. Verify the Destination location and Start Menu folder select install to begin the installation.
14. Next you are going to begin the pocket PC Windows Mobile installation.
15. When prompted select next to begin the pocket PC Windows Mobile installation.
16. To install the software on your mobile device you must accept the terms in the license agreement.
17. Once you accept the license agreement select finish to begin the installation.
18. Wind Image will automatically download the application to your mobile device once completed you should see the following screen.
19. On your mobile device select Device as your install location and click install.



20. Once you click install Wind Image™ will then be installed on your mobile device once installation is complete you should see a screen stating WindImage.CAB was successfully installed.
21. Click ok to complete the installation.

22. On your mobile device click on Start then Programs. In Programs click on the Wind Image™ Icon to start the application.
23. Wind Image™ will now open in trial mode. While in trial mode you will see the following popup every time you start the program. Also some features in the program will be restricted while in trial mode such as edit functionality, image auto move and rename, and the ability to read the image EXIF data. And the program will not remember your settings. To receive full functionality you will need to register your copy Wind Image™ as shown in step 25.



24. Click ok on the popup screen to open Wind Image™. Wind Image™ is now successfully installed on your device.
25. To register your copy of Wind Image™ make sure you have an internet connection then connect your mobile device with ActiveSync.
26. Navigate to Start, Programs, Wind Image™ then select Register Wind Image™.
27. Once open select register and follow the instructions.

If you need assistance with registration email support@windenvironmental.com

Revised 9-9-07